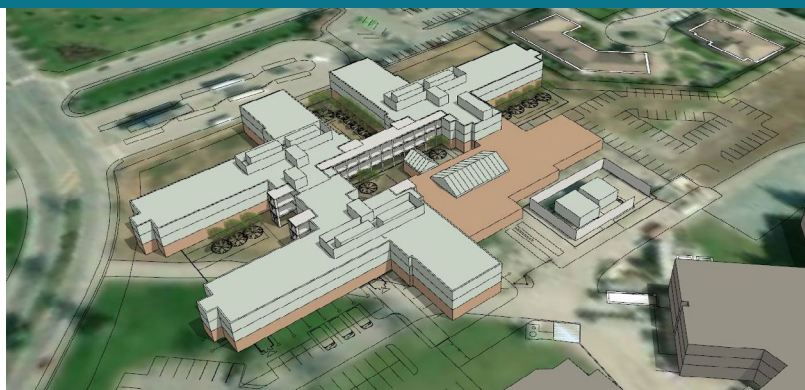




## A Campaign to Transform Long Term Care in Delta

### BEEDIE LONG TERM CARE CENTRE PROJECT AT A GLANCE

- ▶ The new facility will include: social and recreational spaces found in a typical home, such as a living room, dining room, activity space and access to the outdoors
- ▶ There will also be community spaces and services for residents, families, visitors and staff, including art and activity rooms, a hair salon, and a sacred space
- ▶ An innovative stand-alone child daycare facility will be constructed on the grounds and offer 49 spaces for families
- ▶ Project will include a 32-space adult day program for people living more independently
- ▶ 200 bed long term care community
- ▶ New care home will replace Mountain View Manor's 92 beds
- ▶ Capital costs are \$179.7 million funded from the Ministry of Health



- ▶ The Delta Hospital and Community Health Foundation has committed to raise \$18.25 million for the project
- ▶ Fraser Health will construct, own and operate the long-term care community on vacant land at the Delta Hospital site
- ▶ The facility will be designed as “households” accommodating 12 or 13 residents
- ▶ Each resident will have a single-bed room with a bathroom

For more information or to support our ‘Coming Home’ capital campaign, please visit our website at: <https://dhchfoundation.ca/capital-campaign/>

Naming Opportunities available.  
Please contact Jodi Stokes for more information:  
[jodi.stokes@dhchfoundation.ca](mailto:jodi.stokes@dhchfoundation.ca).



**Delta Hospital**  
+ Community Health  
FOUNDATION



"Our unwavering commitment to meeting the evolving healthcare needs of our residents is exemplified by the forthcoming long-term care home in Delta. We are taking significant strides to enhance the well-being of our aging population."

**Dr. Victoria Lee**  
President, Fraser Health

## NEW BEEDIE LONG TERM CARE CENTRE COMING TO DELTA

Delta's seniors are the very heart of our community. It's time to build the kind of home that our seniors deserve. A home that honours every story, a home that we can all be proud of.

That's why Delta Hospital and Community Health Foundation is partnering with Fraser Health to deliver a brand new, state-of-the-art, long-term care community for our loved ones. This will be a place for purposeful living, a place for new stories. A place that truly feels like coming home.

**Be part of the story. Give today!**



### DELTA HOSPITAL AND COMMUNITY HEALTH FOUNDATION

Delta Hospital and Community Health Foundation (DHCH Foundation) is a not-for-profit organization whose mission is to fund and promote outstanding healthcare at the Delta Hospital Campus of Care and in the community of Delta. Since 1988, DHCH Foundation has raised over \$73 million to ensure the best healthcare possible for our community today and for future generations. Learn more at [www.dhchfoundation.ca](http://www.dhchfoundation.ca).

5800 Mountain View Blvd. Delta BC, Canada V4K 3V6  
[dhchfoundation.ca](http://dhchfoundation.ca) | 604-940-9695  
[info@dhchfoundation.ca](mailto:info@dhchfoundation.ca)  
Charitable # - 12984-4114-RR0001



### FOUNDATION STAFF

**Lisa Hoglund**  
Executive Director  
**Shari Barr**  
Annual Giving and Community Initiatives Manager  
**Jena Benson**  
Philanthropy Assistant  
**Kiran Dhillon**  
Marketing Assistant  
**Leanne MacDonald**  
Director of Finance & Operations  
**Cristin Millman**  
Events Coordinator  
**Ashli Owen**  
Communications Manager  
**Chelsey Ponech**  
Foundation Assistant  
**Jodi Stokes**  
Legacy and Leadership Giving Manager

### BOARD OF DIRECTORS

**Andrew Jackson**, Chair  
**Rick Boates**, Vice Chair  
**Paul Challinor**, Treasurer  
**Pam Paton**, Past Chair  
**Monica Bohm**  
**Sue Dujmovic**  
**Sarah Gallop**  
**Lawrence Green**  
**Knut Nordlie**  
**Karen Powar**  
**Jit Sangha**  
**Don Sangster**



**Delta Hospital**  
+ Community Health  
FOUNDATION